

Christopher Whitehouse

MRICS BSc (Hons) RICS Accredited Expert Witness

Biography

Christopher Whitehouse is an experienced Chartered Planning & Development Surveyor and RICS Accredited Expert Witness in Planning.

As Managing Director of Town Planning Consultancy NextPhase, Christopher provides a range of services associated with planning applications across England and Wales for major residential and mixed-use development including Planning Statements, Tailored Advice, Application Management and Consultation.

Christopher provides advocacy and expert witness work within Public Inquiries, Appeal Hearings and High Court cases; and undertakes both Environmental Statements and Affordable Housing Viability Appraisals.

Acknowledgements & Awards

Christopher's determination has seen him recognised by the Royal Institute of Chartered Surveyors, a highly respected institution, as an exceptional ambassador for the industry, Winning Young Surveyor of the Year in the category of Planning and Development in 2014. He was also one of the youngest people in the UK to become an RICS Accredited Expert Witness.

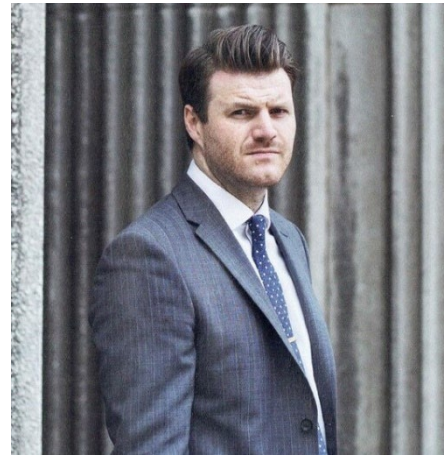
Availability

Christopher runs NextPhase on a day to day basis, overseeing major commercial, mixed use and residential applications together with individual and bespoke applications. Christopher works as both an Expert Witness and advocate within the Planning Court, Planning Appeal Hearings and Public Inquiries and is listed on the RICS Expert Witness Register.

Please visit www.nextphase.dev for more information

Historical Publications

"The Planning Doctors Guide to Understanding Planning"
(C. Whitehouse MRICS 2015)



Professional Services & Specialisms

Christopher specialises in:

- Planning Appeals
- Expert Witness Service
- Planning Statements
- Environmental Statements
- Financial Viability Assessments
- Public & Professional Consultation

Expert Witness Specialisms

- Planning Policy
- Planning Application Decision Making
- Housing Allocations and Objectively Assessed Need
- Development Plan Departure Applications
- Environmental Statements and EIA Regulations

If you have any opportunities or cases that you would like to discuss, please contact me using the details below.

HEAD OFFICE

NextPhase Development Ltd, 8 Bore Street
Lichfield, Staffordshire, WS13 6LL
Tel: 01543 57 17 18

CONTACT ME

Tel: 01543 57 17 18
Email: mail@nextphase.dev
Website: nextphase.dev

